



WIRETEST T1 Wiretesting

COM-TEN
INDUSTRIES



Manual terminal and wire tester

Ideal for testing pull force on terminals, the WIRETEST T1 system measures the break forces for terminals up to 100lb. The test stand TEX 555 features a reversible arm to pull on the terminal, small footprint, durable design and portable. The force gauge can be set to beep as soon as the necessary force has been reached. The operator then stops the wire pull test without reaching the pull-out force.

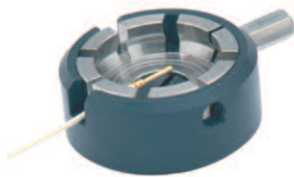
Mounted with a carrousel, the WIRETEST T1 can be used to test cables from AWG24 to AWG14 without changing the holding fixture. The operator saves time and the tester is always operational.

Ready to use, supplied with a basic eccentric fixture for wire and a self-closing wedge clamp for all standart terminals.

System includes:

- Force gauge Centor Easy with internal sensor capacity 100 lb
- Test stand TEX555
- Carrousel for terminal
- Eccentric clamp
- Certificate of calibration traceable to NIST

Accessoires Inclus



Wire terminal fixture:

Our accessory carrousel is designed for maintaining crimp terminals during quality tensile tests to determine the break force of crimps, stands up to a crimping force of 100 lb. It can be used with all types of crimp terminals but also for crimp pins or crimp sleeves fitted to the beams and electrical harnesses.

With its 8 slots with various openings, the operator may test the cable with a size between AWG24 to AWG14 without changing the holding accessory.

Self-closing wedge clamp:

The self-closing wedge clamp is used to maintain wires, cables and terminals during tensile tests. Designed to increase the clamping force as the tensile force increases. It prevents any slippage of the cable inside the grip.

With a maximum opening of 0.2 in and a fast opening system, our self-closing wedge clamps can test easily all types of cables.

Maximum capacity 100 lb, opening 0.2 in



Model and capacity

SPECIFICATIONS	WIRETEST T1
Capacity	0 - 100 lb
Accuracy	0.1 lb
Resolution	0.01lb
Travel	6 in
Cable maximum diameter	0.2 in
Cable maximum length	12 in

Specifications

FEATURES	WIRETEST T1	FEATURES	WIRETEST T1
Accuracy	0,1 % PE	RS232 output	Send current reading,, peak or minimum
Resolution	1/10 000 PE	Fast charge	✓
Display peak and current reading in the same time	✓	Reversible display	✓
Units	N, Lb, Kg, g, Oz	Digimatic output	✓
Bargraph	✓	Backlit display	✓
Sampling rate	1 000 Hertz	Sensor protected from overloads up to 200% of its capacity	✓
Tare	✓	Operates on rechargeable batteries	✓
Auto-off	Adjustable from 5 to 15 min	Operation without recharging	8 hours
Force limit	✓	Metal casing	✓
Average and standard deviation	✓	Protective elastomer overmould	✓
Low battery indicator	✓	Power supply	110V / 220V
Peak in tension and compression	✓		
Memory for setup	✓		

WIRETEST TI Wire testing

COM-TEN
INDUSTRIES



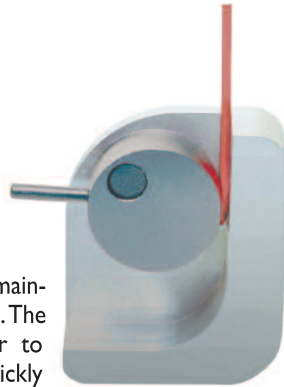
Options - Accessories

Optional software



Optional two self-closing wedge clamps:

For tensile tests on cables without terminals or if the terminals don't fit into the carousel fixture, the WIRETEST TI can be mounted with two self-closing wedge clamps.



Eccentric clamp:

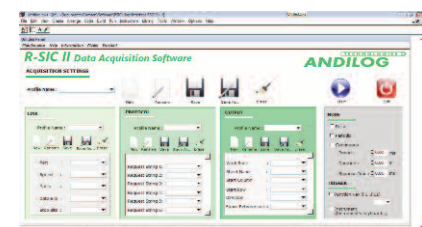
This eccentric clamp is used to maintain without damaging the cable. The movement system allows lever to tighten and release the cable quickly without effort.

Designed for tensile tests up to 100 lb, the clamping system prevents slippage of the sheath and ensure proper fixing of the cable.

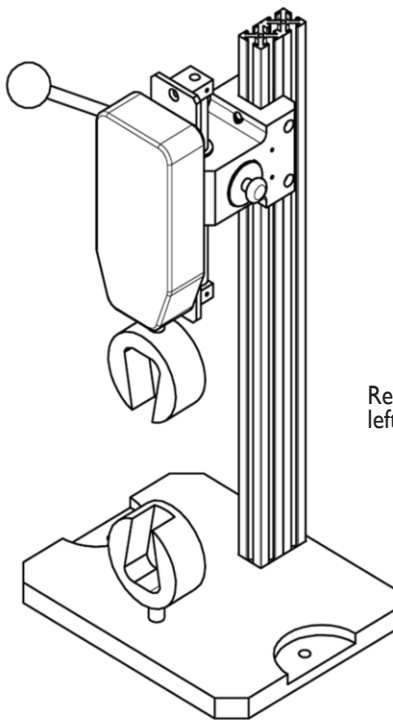
Caligraph software compatible: Data acquisition and analysis of curves with real time graphing thru RS232 or USB.



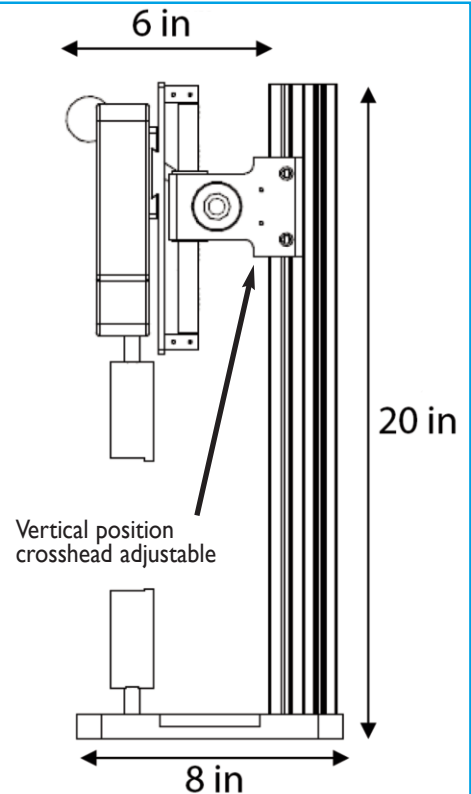
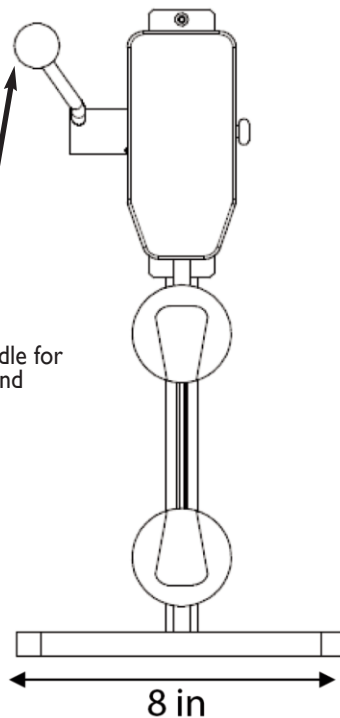
RSIC software compatible : Download your results to Microsoft Excel using your RS232 comport.



Dimensions



Reversible handle for left or right hand



COM-TEN
INDUSTRIES



Certified ISO
9001:2008

COM-TEN Industries

6405 49th Street North
Pinellas Park, FL, 33781 - USA

sales@com-ten.com • www.com-ten.com
Tel. : +1 727-520-1200 • Fax : +1 727-520-0299