



TEX555 High capacity Manual test stand



Manual test stand for force measurement up to 2000N

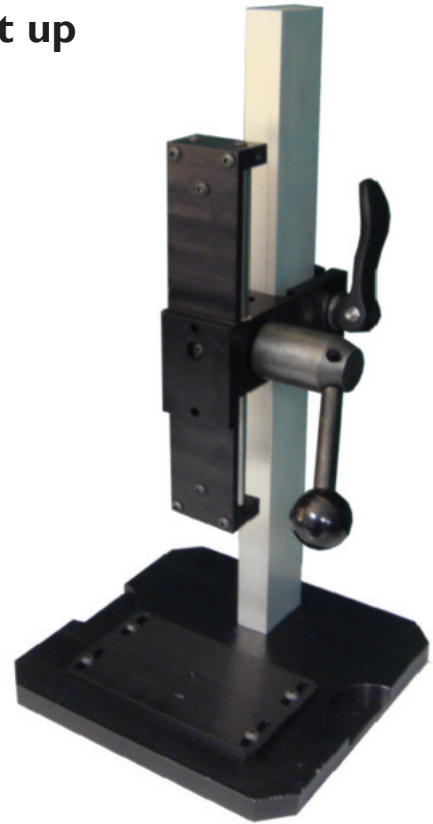
Designed to test up to 2000N in tension and compression, it is the perfect test stand for application that require reliable and speed measurement. The Manual test stand TEX555 is ideal for accurate and repetitive tensile and compression tests. It fits any type of applications as: springs, wire terminals, foam, peeling...

Thank to its revolving hand crank, tests are performed quickly, as the adjustment of the working height using its quick positioning cam handle.

The TEX555 is robust, accurate and its small footprint makes it ideal for use in the factory floor and laboratory. Our entire range of force gauge with internal or external sensor adapts to the TEX555 frame.

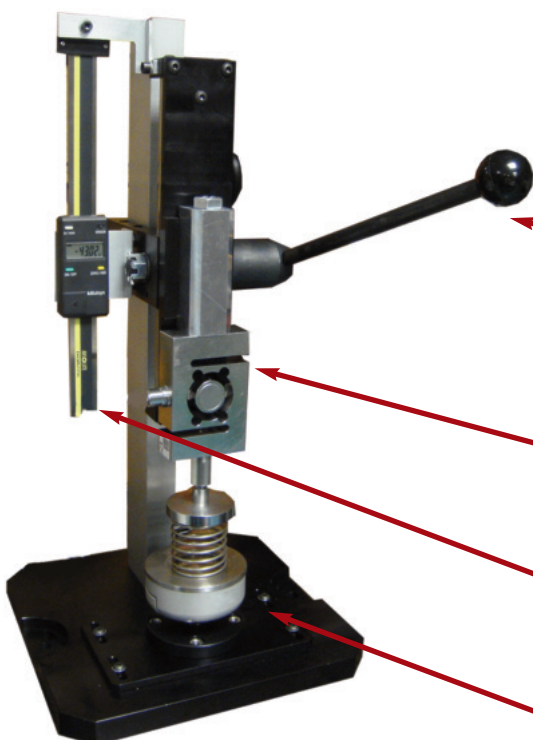
Measures requiring a high capacity or if you want to have a remote display, the test stand TEX555 can be equipped with an external force sensor.

An optional digital travel display is available. It displays in real time the position of the frame with a resolution of 0.01mm.



Models and Capacity

SPECIFICATIONS	TEX555	TEX555R
Capacity	2 000 N	2 000 N
Crosshead travel	175 mm	175 mm
Travel with one crantck's revolution	80 mm	80 mm
Height between table and crosshead	380 mm	380 mm
Adjustment position worktable	24 mm	24 mm
Base dimension	230 x 240mm	230 x 240mm
Total height	476 mm	476 mm
Displacement measurement	No	Yes
Displacement resolution		0,01 mm
Weight	7 kg	7,5 kg



TEX555 is delivered with 2 handles: short and long

Mounting adaptor for external sensor

Digital travel display with 0.01 mm resolution

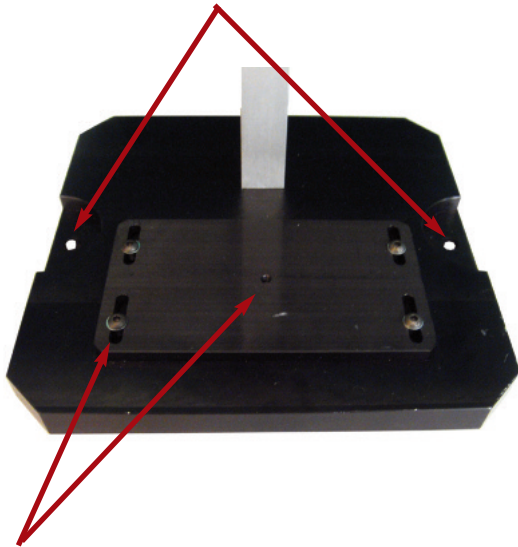
TEX555R mounts with a self leveling compression platen, ideal for spring test application

TEX555 High capacity Manual test stand

TECHNOLOGIES
ANDILOG

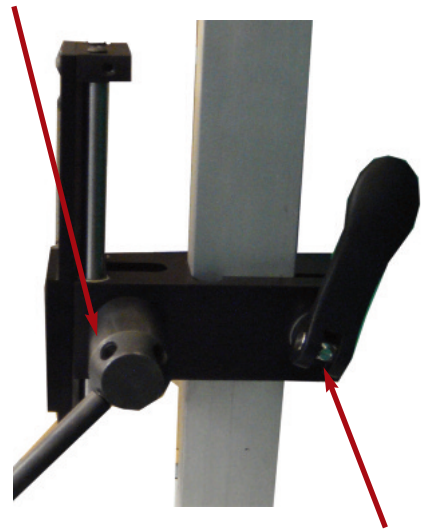


The frame base is equipped with 2 anchor holes, for fastening and holding the test stand to your workstation



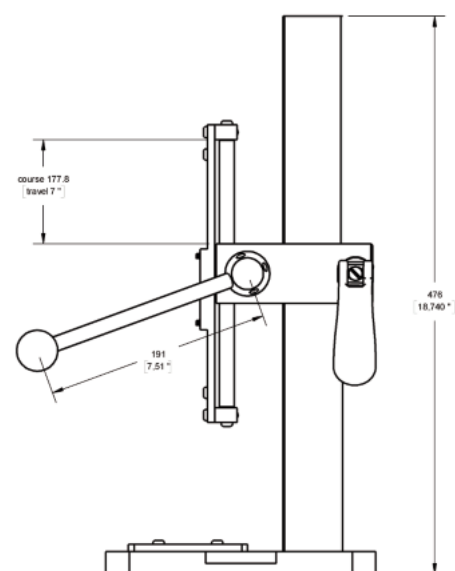
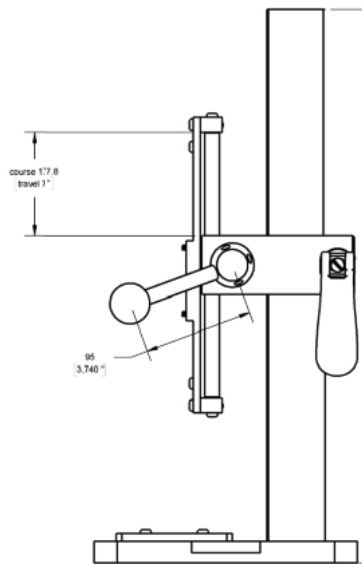
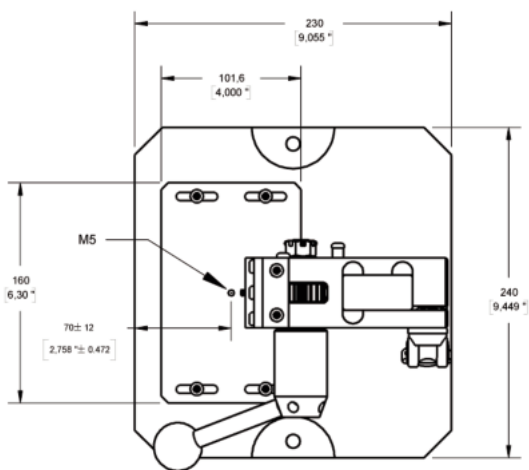
The frame base has an adjustable plate in order to align samples and force sensor (M5 female thread)

The original position of the crank can be easily and quickly adjusted, thank to the four available positions on the rotational axis.



Adjusting the original height of the force gauge is done using the quick positioning cam handle, no tool is required.

Dimensions



TECHNOLOGIES
ANDILOG

AB  **ISO 9001:2008 certified**
CERTIFICATION

ANDILOG Technologies

BP 62001

13845 Vitrolles Cedex 9 , FRANCE

info@andilog.com • www.andilog.com

Phone : +33 (0) 820 888 202 • Fax : +33 (0) 820 888 902